




Architects . Engineers

آرك

ARC
International



Working to the highest standards of design and engineering, ARC creates innovative buildings that visually enhance the environment.

ARC International
is a dynamic Architectural and Engineering practice.

Licensed since 1983, the firm is based in the Emirate of Dubai and works across all areas of Master Planning, Architectural and Engineering Design, Tender Documentation and Site Supervision

Quality in service and commitment to the pursuit of excellence in architectural services

Disciplines

Master Planning:

► .06 - .08

- .06 *Le Jardin de L'Atlas*
- .07 *Al Ameera Village*
- .08 *Al Marsa Floating City*

Architecture

► .10 - .19

- .10 *V3 Tower*
- .11 *Dubai Central Laboratories*
- .12 *Lotus Office Building*
- .13 *Labour Accommodation in Jebel Ali*
- .14 *Al Khail Mall*
- .15 *Private School in Al Barsha*
- .16 *Multi Storey Car Park Ras Al Khor Ind-3*
- .17 *Al Fattan Showroom*
- .18 *Al Fattan Residence*
- .19 *Multi Storey Car Park in Sabkha*

Site Supervision

► .21 - .27

- .21 *Ritz Carlton Hotel*
- .22 *The Palacio*
- .23 *Gemini*
- .24 *Marina Arcade*
- .25 *Jumeirah Executive Offices*
- .26 *Sands Office*
- .27 *Dubai Islamic Institute*

Villas Al Marsa Floating City Horse Riding Club Acknowledgements

► .28 - .29
.30 - .31
.32
.34



MASTER PLANNING





Detailed View



Perspective

Les Jardin De L'atlas

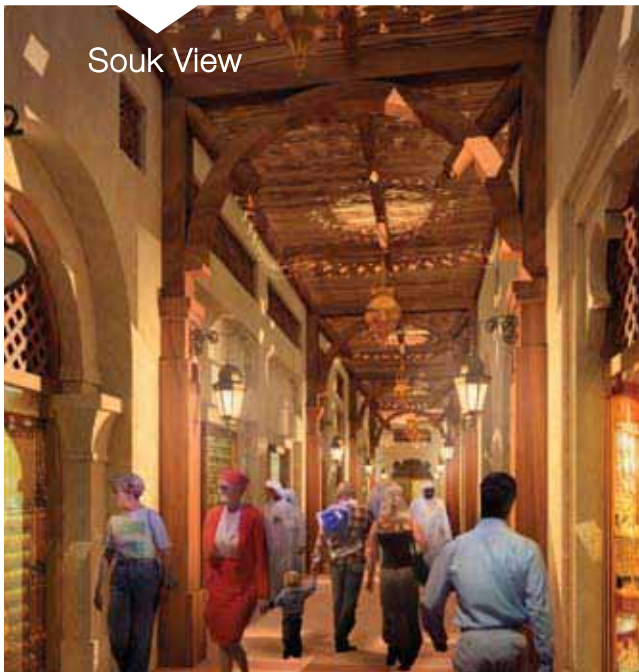
Project Title	Le Jardin de L'Atlas
Description	18 Holes Golf Course, Hotels, Theme Villages & Commercial Centre
Location	Marrakech, Morocco
Completion date	2007
Plot size (sq ft)	16 Million sq ft
Gross Floor Area (sq ft)	---
Scope	Master Planning

Project Title	Al Ameerah Village
Description	Residential, Retail, Furnished Apartments, Hotel
Location	Emirates Highway, Ajman, UAE.
Completion date	Design completed, project construction on hold
Plot size (sq ft)	1 million sq ft
Gross Floor Area (sq ft)	3.5 Million sq ft
Scope	Master Planning

Al Ameerah Village



Master Plan



Souk View

Al Marsa Floating City

In collaboration with Spoerry Architects, France

Project Title	Al Marsa Floating City
Description	Residential Marine Villas and Apartments and Retail
Location	Amwaj Islands, Bahrain
Completion date	2007
Plot size (sq ft)	2.0 Million sq ft
Gross Floor Area (sq ft)	---
Scope	Design & Site Supervision



Aerial View

ARCHITECTURE





V3 Tower - In collaboration with Al Bahar Architects

Project Title	V3 Tower
Description	3B+G+37
Location	Emirates Hills 1st , Dubai, UAE
Completion date	November 2009
Plot Size	18,000 sq ft
Gross Floor Area	469,000 sq ft
Scope	Design & Site Supervision

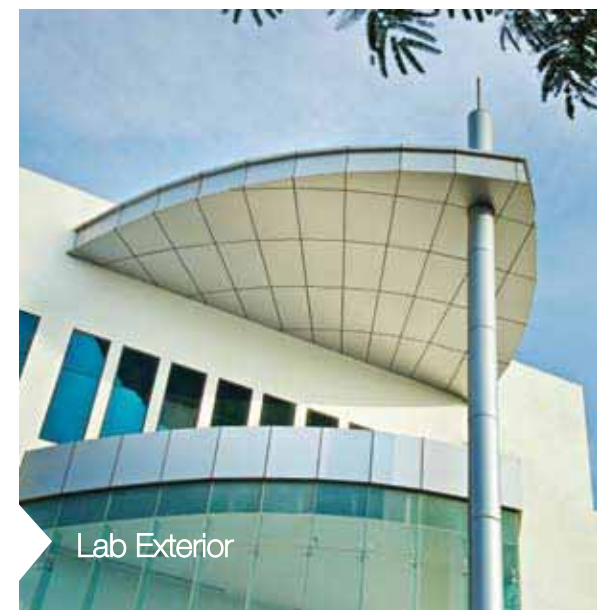


Dubai Central Laboratories

Project Title	Laboratories & IT Building at DCL
Description	G+3 Floors + Roof
Location	Al Karama, Dubai, UAE
Completion date	January 2009
Plot Size	460,000sq ft
Gross Floor Area	140,000sq ft
Scope	Design & Site Supervision



Perspective



Lab Exterior



Entrance Lobby

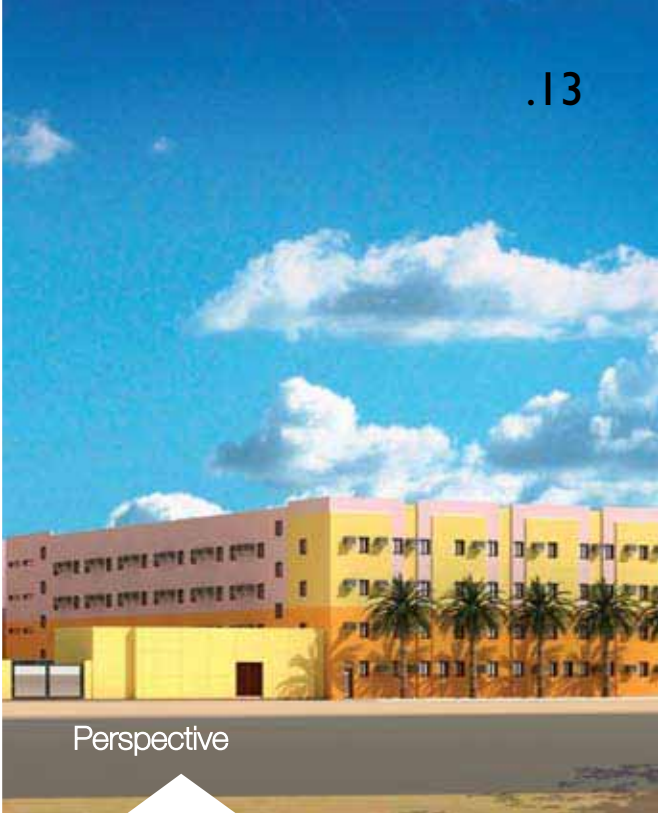
Lotus Office Building

Project Title
Description
Location
Completion date
Plot Size
Gross Floor Area
Scope

Lotus Office Building
B+G+4+Roof
Al Quoz Industrial 1st,
Dubai, UAE
April 2009
103,000 sq ft
96,000 sq ft
Design & Site Supervision



Perspective



Perspective



On Site

Labor Accommodation
in Jebel Ali

Project Title
Description
Location
Completion date
Plot Size
Gross Floor Area
Scope

Labour Accommodation
in Jebel Ali
G+3
Jebel Ali, Dubai, UAE
November 2008
159,000 sq ft
275,000 sq ft
Design & Site Supervision



On Site

.14



Al Khail Mall

Project Title	Al Khail Mall
Description	B+G+M+I floor
Location	Al Quoz 4th, Dubai, UAE
Completion date	September 2009
Plot Size	70,000 sq ft
Gross Floor Area	252,000 sq ft
Scope	Design & Site Supervision



Perspective

.15



Perspective

Private School in Al Barsha

Project Title	Private School Building
Description	B+G+2
Location	Al Barsha 4th South, Dubai, UAE
Completion date	March 2009
Plot Size	220,000 sq ft
Gross Floor Area	248,000 sq ft
Scope	Design & Site Supervision





Perspective



Multi Storey Car Park Ras Al Khor Ind-3

Project Title	Multi Storey Car Park Ras Al Khor Ind-3
Description	G+3+Roof Car Park
Location	Ras Al Khor Ind-3, Dubai, UAE
Completion date	August 2009
Plot Size	123,000 sq ft
Gross Floor Area	352,000 sq ft
Scope	Site Supervision



Al Fattan Showroom

Project Title	Al Fattan Showroom
Description	Phase I - Show Room (G+M)
Location	Sheikh Zayed Road, Dubai, UAE
Completion date	March 2007
Plot Size	103,000sq ft
Gross Floor Area	33,000sq ft
Scope	Design & Site Supervision



Perspective



Outside View

Al Fattan Residence

Project Title	Al Fattan Residence at Al Qusais
Description	1B+G+6 Floors
Location	Al Qusais Second, Dubai, UAE
Completion date	2005
Plot size (sq ft)	58,000 sq ft
Gross Floor Area (sq ft)	400,000sq ft
Scope	Design & Site Supervision

Perspective

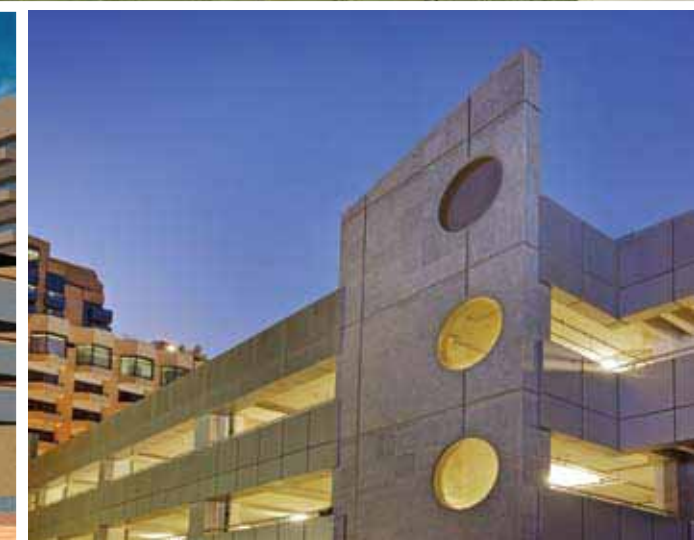
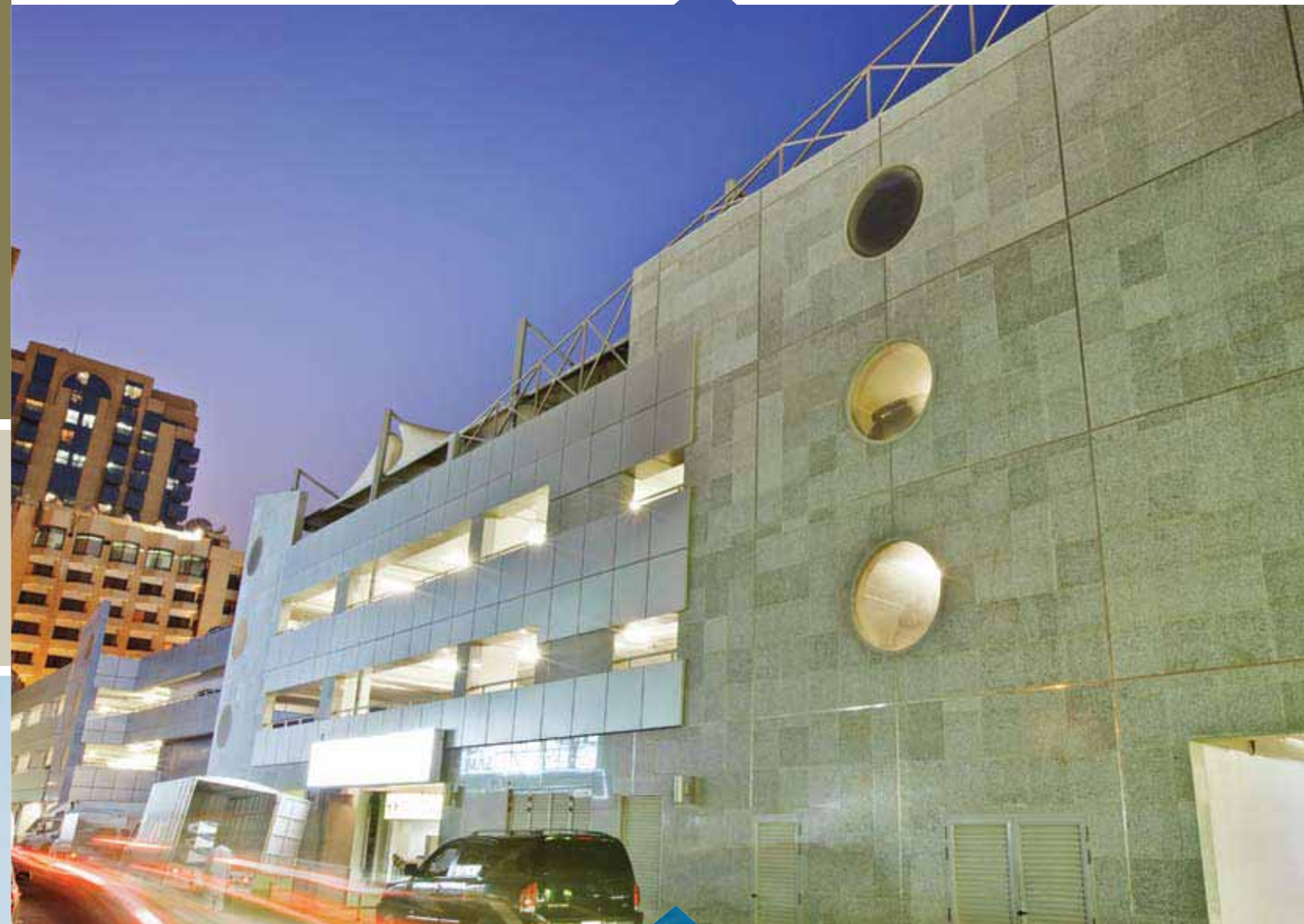


Outside View



Multi Storey Car Park in Sabkha

Project Title	Multi Storey Car Park
Description	B+G+2Floors
Location	Al Sabka, Dubai, UAE
Completion date	October 2007
Plot Size	44,000 sq ft
Gross Floor Area	215,000 sq ft
Scope	Design & Site Supervision



SITE SUPERVISION



Ritz Carlton Hotel

In collaboration with Gensler

Project Title	Ritz Carlton Hotel & Apartments
Description	3B+19 floors hotel
Location	DIFC, Dubai, UAE
Completion date	May 2010
Plot size (sq ft)	248,000 sq ft
Gross Floor Area (sq ft)	2.5 Million Sq Ft
Scope	Architectural Design & Site Supervision



The Palacio

Project Title	The Palacio
Description	3B+G+P+13 Floors
Location	Dubai Silicon Oasis, Dubai, UAE
Completion date	November 2010
Plot Size	50,000 sq ft
Gross Floor Area	510,000 sq ft
Scope	Design & Site Supervision



Gemini

In collaboration with IF Architecture, Germany

Project Title	The Gemini at Business Bay
Description	2B+G+20
Location	Business Bay, Dubai, UAE
Completion date	2012
Plot Size	97,000 sq ft
Gross Floor Area	389,000 sq ft
Scope	Design & Site Supervision





Marina Arcade

In collaboration with
IF Architecture, Germany

Project Title	Marina Arcade
Description	3B+G+64 Residential Tower & Shopping Mall
Location	Al Marsa, Dubai, UAE
Completion date	2012
Plot Size	195,000 sq ft.
Gross Floor Area	4.88
Scope	Design & Site Supervision



Jumeirah Executive Offices



Project Title	Jumeirah Executive Offices
Description	G+2
Location	Umm Suqeim 2nd, Dubai, UAE
Completion date	December 2009
Plot Size	8,000 sq ft
Gross Floor Area	14,000 sq ft
Scope	Design & Site Supervision





Sands Office

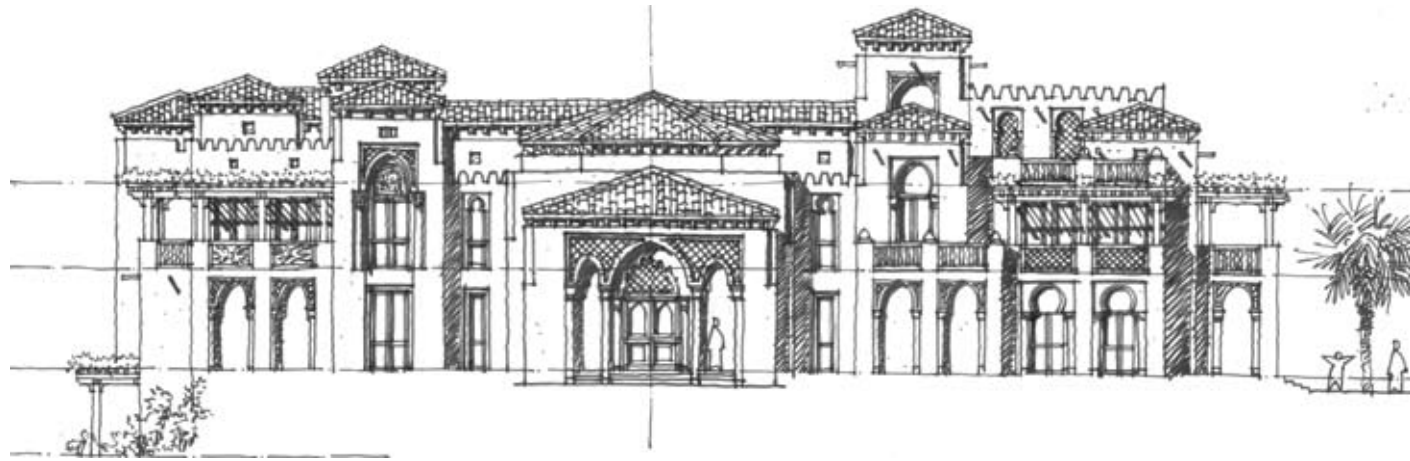
Project Title	Sands Office
Description	B+G+2
Location	Umm Suqeim 1st
Completion date	February 2010
Plot Size	12,000 sq ft
Gross Floor Area	41,000 sq ft
Scope	Design & Site Supervision



Dubai Islamic Institute

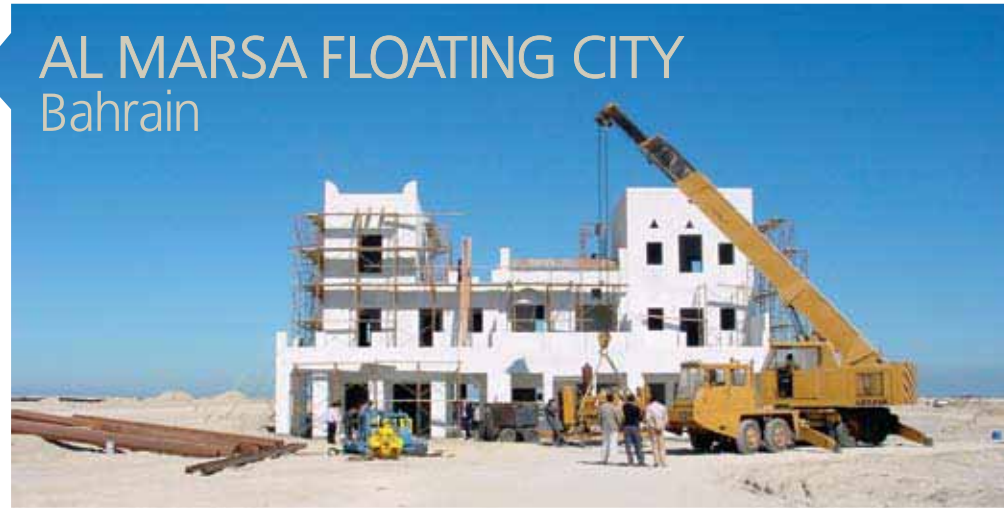
Project Title	Dubai Islamic Institute
Description	G+2
Location	Knowledge Village, Dubai, UAE
Completion date	March 2010
Plot Size	917,000 sq ft
Gross Floor Area	54,000 sq ft
Scope	Site Supervision







AL MARISA FLOATING CITY
Bahrain





LADIES HORSING CLUB

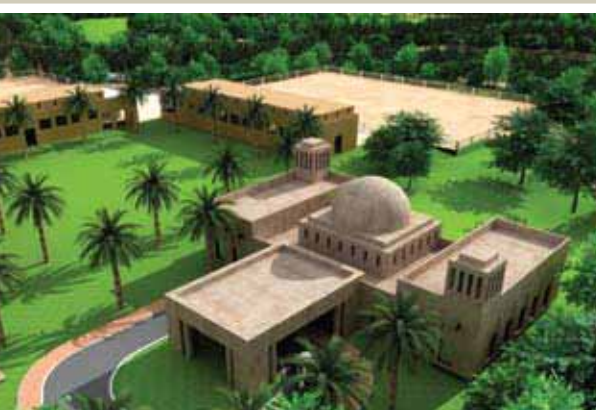


Project Title
Description

Ladies Horsing Club
Horsing club with high
standard facilities
for ladies entertainment
& horsing activities.

Location
Completion date
Plot Size
Scope

Dubai, UAE
Conceptual Design stage
3.4 M sq ft
Design & Site Supervision



ACKNOWLEDGEMENTS

List of Clients

- Dubai Municipality
 - Union Properties
 - Tameer Holdings
 - Omniyat Properties
 - Al Fattan Properties
 - Engineer's Office
 - Al Ahlia Group
 - Abdul Salam Al Rafi
- Al Saraya Properties – Bahrain
 - Thani Investment
 - Gensler
 - Le Palmerie Group – Morocco
 - Al Madina Properties – Muscat
 - Mada'in Properties
 - Future Bank – Bahrain

List of Architectural Associates

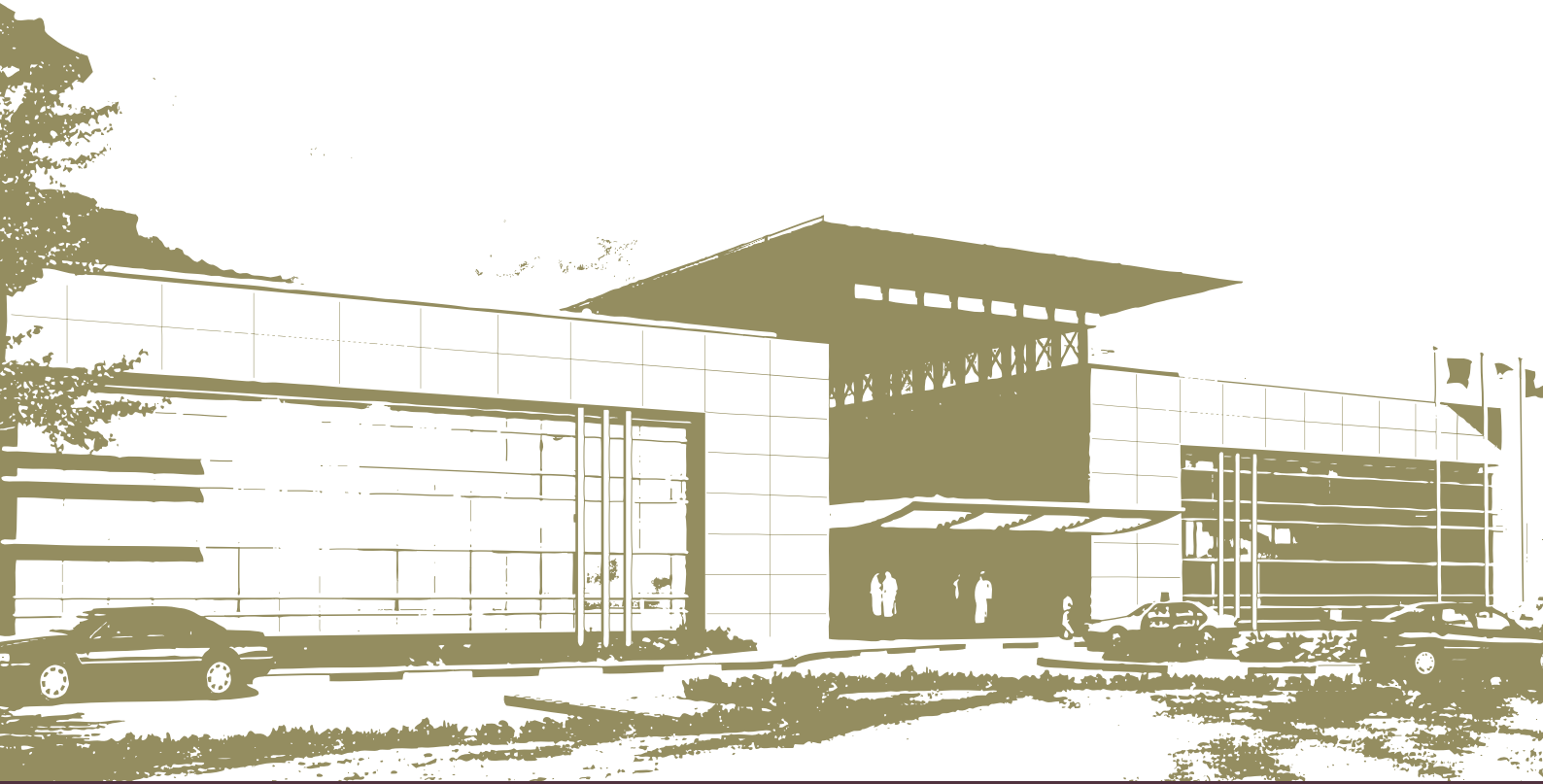
1. Project name: **Ritz Carlton Hotel**
Concept by : Gensler, UK
Architectural Design & Site Supervision by : ARC International

2. Project name: **Al Marsa Floating City**
Joint Venture with Spoerry Architects, France

3. Project name: **Gemini, Business Bay**
Join Venture with IF Architecture, Germany

“Simplicity is the ultimate sophistication.”

~ Leonardo da Vinci



Architects . Engineers

ARC International
(Architectural & Engineering Consultants)

102 Al Fattan Plaza , P O Box: 13581
Dubai, United Arab Emirates

Tel : +9714 283 0080

Fax : +9714 283 0980

www.arc.ae